

The OSI Model explained using Etsy

Gina DelVecchio



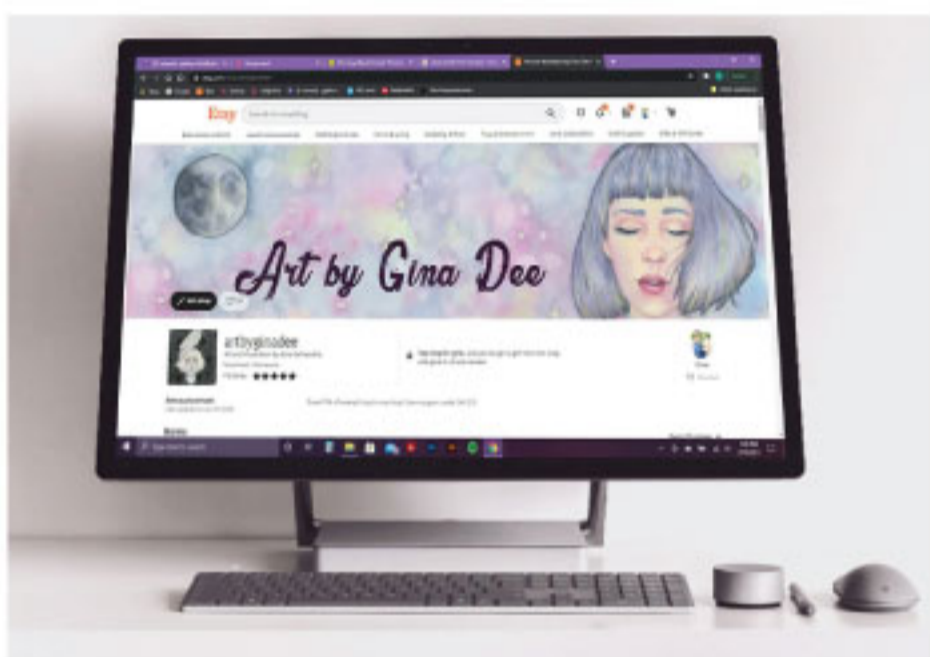
Daisy and I are going to go through the layers of the OSI model to show how Etsy works from start to finish (or from finish to start as the layers work that way in this case!).

APPLICATION LAYER: Where the user inputs data and data is output to the user. The application layer provides services for email, for example. In this case, I receive an email notification that one of my items has sold.



PRESENTATION LAYER: Where the human user interacts with the application layer and the application interacts with the presentation layer. It encodes and encrypts data. In this case, the Etsy shopper decides to purchase an item from my shop and begins the check out process where they enter their payment information.

SESSION LAYER: Responsible for creating and maintaining sessions between the operating system on the presentation layer and other third party machines. In this case, the Etsy shopper logs into the app (or creates an account) and begins a session where they browse through items and add things to their shopping cart.



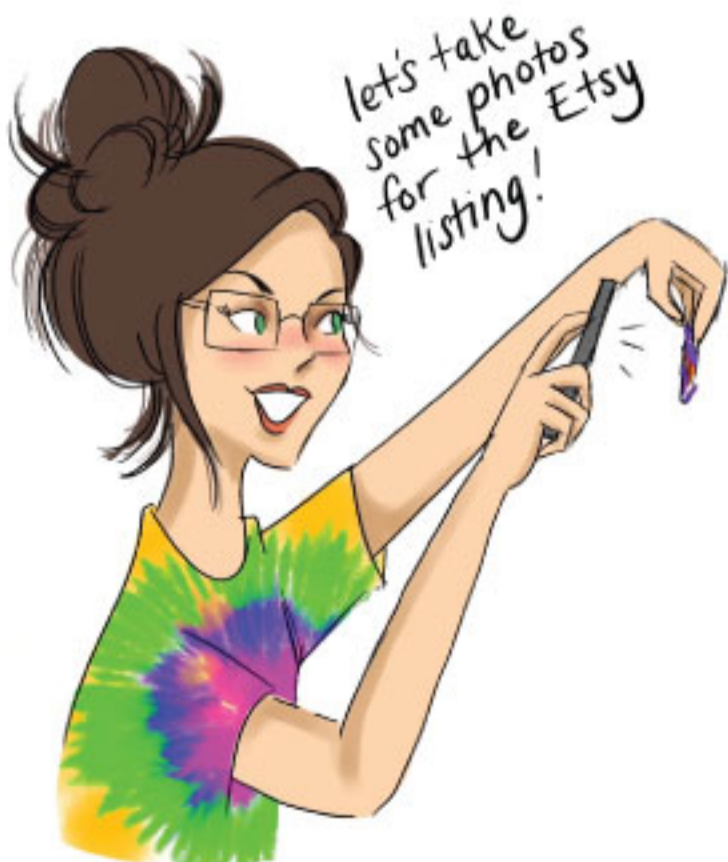
TRANSPORT LAYER: Provides host to host communication services for applications. Transport layer would be responsible for what and how much information is transferred between the operating system and server. In this case, my shop page on Etsy is updated and the listing is live.



NETWORK LAYER: The router forwards packets of information between the computers on a network. In this case, the new listing that I created leaves my laptop and is sent to the Etsy server.

DATA LINK LAYER: Transfers data and ensures that it is transmitted without errors. In this case, I create the listing for my new item on my laptop and hit the "publish" button.

PHYSICAL LAYER: Where the hardware is on the network. Allows the higher levels to function. In this case, I am able to maintain my online shop and create new listings because my laptop is using wifi that transmits to a router.



Thank you for joining Daisy and I on our adventures through the Etsy OSI model!